

## DEERFIELD COMMUNITY SCHOOL DISTRICT PROJECT PROGRESS REPORT

October 2024 Update



NEW SMALL GYM BLEACHERS

### LOCAL PARTNER SPOTLIGHT

With over four decades of expertise, Badgerland has become a trusted name in structural steel and concrete reinforcement. Based in Waunakee, WI, they are a local subcontractor serving Dane County and beyond. Their team of skilled professionals is bringing their craftsmanship to the Deerfield Middle-High School project, where they have installed all rebar, structural steel, and ornamental steel.

### WHAT'S NEW?

#### Unit C Addition - Maintenance & Autos

- » Concrete floors have been sealed.
- » The binder course (1st layer) of asphalt was placed on north and south entrances to Maintenance and Autos. The surface course will be placed next summer.
- » Punch walk was completed with the architect, engineers, and Deerfield staff.
- » Final touch ups are being completed before turning over to Deerfield.

#### Unit D/F Addition - New Classrooms

- » Light gauge metal framing and DensGlass Sheathing continues.
- » Exterior spray foam is nearing completion and should be finished in early November.
- » EPDM roofing is 2/3 complete and is scheduled for completion by mid-November.
- » Mechanical, electrical, plumbing, and fire protection are currently roughing in.
- » Metal stairs have been erected so craftworkers can access the second floor without the use of ladders.

#### Unit B - Small Gym and Locker Rooms

- » Bleachers, basketball backboards, and wall protection pads have been installed.
- » The original existing lockers have been painted to match the new lockers.
- » All electrical, plumbing, and HVAC finishes have been installed.
- » Resinous flooring in the locker rooms has been installed.
- » Windowsills and shades have been installed.
- » Punch walk was completed with the architect, engineers, and Deerfield staff.

### WHAT'S NEXT?

- » Fiber cement siding is arriving early November and installation will begin on the exterior of the south gym.
- » Drywall installation will begin in mid-November once the roof installation is complete.
- » The small gym and locker rooms will be ready for use by November 11th.





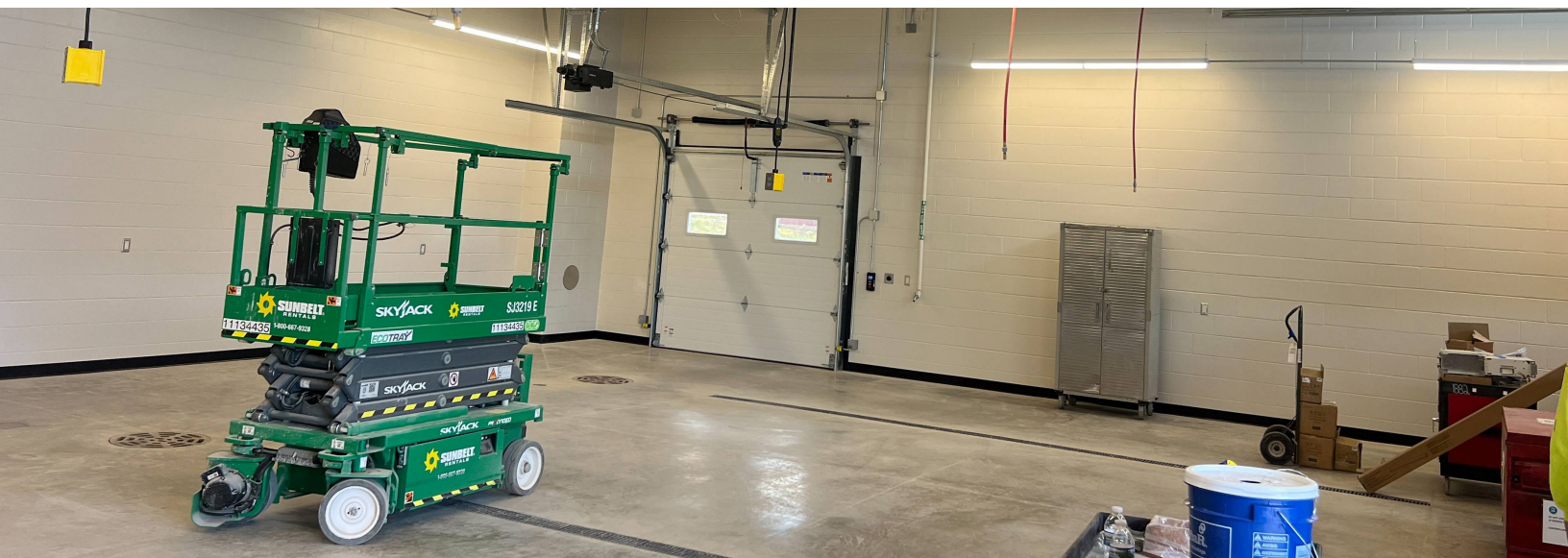
ROOF CLEARED, READY FOR EPDM (RUBBER ROOF) INSTALL



NORTH CANOPY INSTALL PROGRESS



BATHROOM ACCESSORIES INSTALL



CLEANING OUT MAINTENANCE ROOM #C111