

DEERFIELD COMMUNITY SCHOOL DISTRICT PROJECT PROGRESS REPORT

September 2024 Update



EXTERIOR SHEATHING AND WINDOW BLOCKING

LOCAL PARTNER SPOTLIGHT

Wisconsin Built, located in Deerfield, Wisconsin, has been a leading provider of custom woodwork and architectural millwork since its founding in 1989. Known for their high-quality craftsmanship, they have taken on projects across a variety of industries. Currently, Wisconsin Built is contributing to the local community by working on the Deerfield Middle-High School renovation project. They are supplying all the casework and countertops for the school.

WHAT'S NEW?

Unit C Addition - Maintenance & Autos

- » Sectional and coiling overhead doors have been installed.
- » FRP man doors have been installed.
- » The building interior has been painted.
- » MEPF trim is being installed.

Unit F Addition - New Classrooms

- » Placed the slab on metal deck
- » Placed the slab on grade.
- » Light gage metal framing and dens glass sheathing in progress.
- » Interior metal stud framing has begun
- » Brick at unit D is complete.
- » Completed cmu walls inside unit D
- » Structural steel erection is complete. Finishing detailing of the steel framing.

Unit B - Small Gym and Locker Rooms

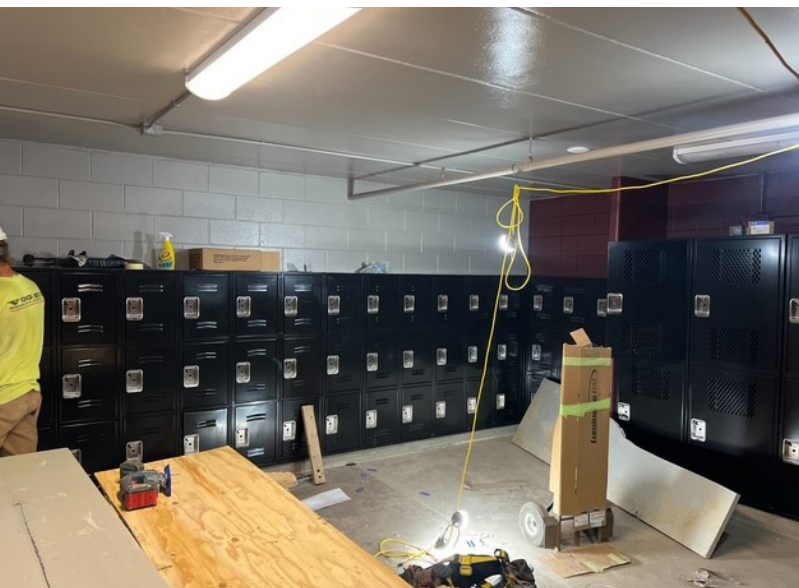
- » Painting is complete
- » Ceramic tile is complete
- » Setting plumbing fixtures
- » Installing lockers and benches
- » Striping the gym floor
- » MEPF trim is continuing

WHAT'S NEXT?

- » Complete sealed concrete floors in Unit C Maintenance & Autos
- » Asphalt pavement at the drive to Maintenance & Autos
- » Interior and exterior metal stud framing and sheathing will continue
- » Install of gym equipment and bleachers mid October
- » Resinous flooring in the locker rooms next week
- » Install windows in unit D
- » Spray insulation/vapor barrier and brick at Unit F



INSTALLING INTERIOR BLOCK WALLS AT UNIT D



INSTALLING LOCKERS IN UNIT B



PAINTING COURT MARKINGS IN SMALL GYM



FINISHING SLAB ON GRADE IN UNIT D